

Borough of Peapack & Gladstone - Council Meeting

Matheny Update

Presented by:

Bill Kent, President & CEO

Matheny Medical & Educational Center

May 23, 2023

Faces of Matheny!



JOY!

Agenda

- Who We Are
 - Impact of COVID-19 on Matheny
 - Key Settlement Agreement Provisions
 - Recent Traffic Improvements
- Planning for Our Future – “One Matheny” Strategic Plan
- Planning for Our Facility Needs – Master Facility Plan
 - Timeline for Master Facility Plan



Who We Are

Founded in 1946 as a school for children with cerebral palsy and other developmental disabilities

Today Matheny's services include:

Peapack Gladstone Campus

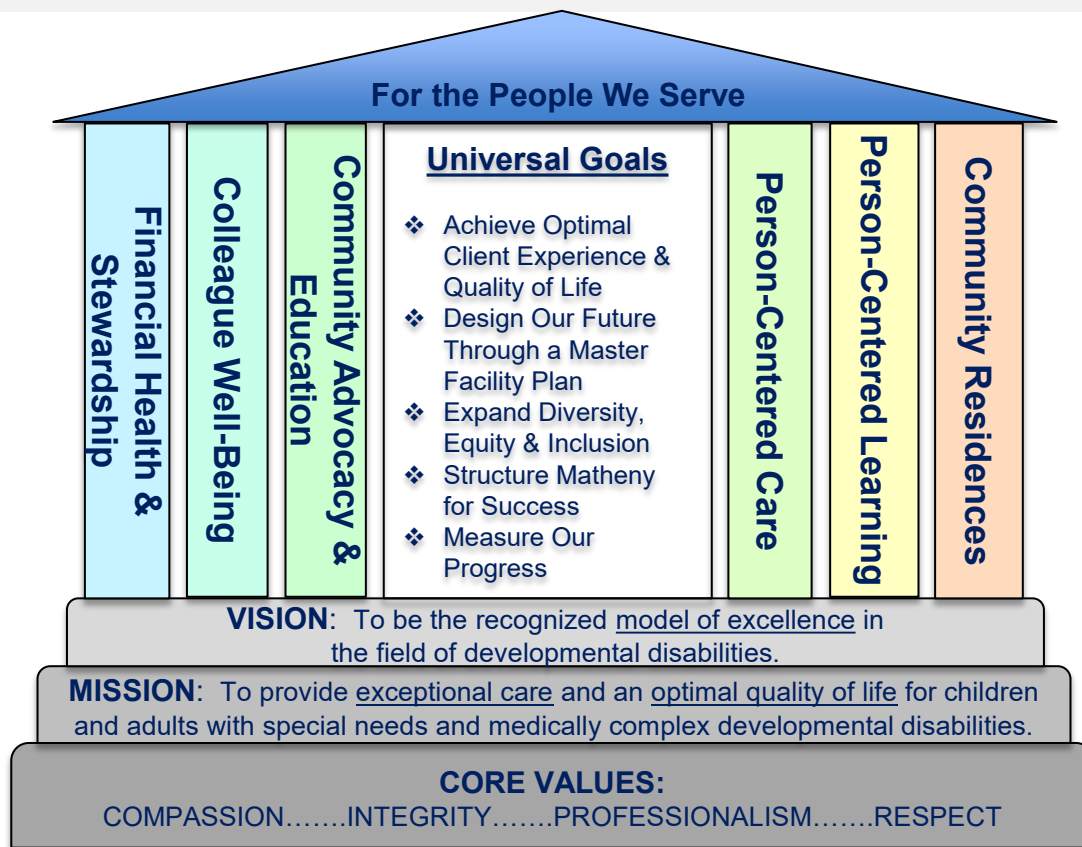
- **Matheny Medical Center** – 101-bed hospital for children and adults with medically complex developmental disabilities
- **Matheny School** – Pre-K through 12 providing special education for academics and functional life skills
- **Center of Medicine and Dentistry** – Outpatient services for Matheny residents
- **Arts Access** – Nationally recognized program supporting the creative and performing arts

Off-Site Locations

- **Bedminster Administrative Offices**
- **Group Homes** – 7 community residences serving 38 adults in Somerset and Warren counties
- **2 Adult Day Learning Centers** (Hillsborough and Peapack) – Life enrichment therapies and recreational services
- **Training for Healthcare Professionals** – Nurses, Medical Students, Therapists and Educators

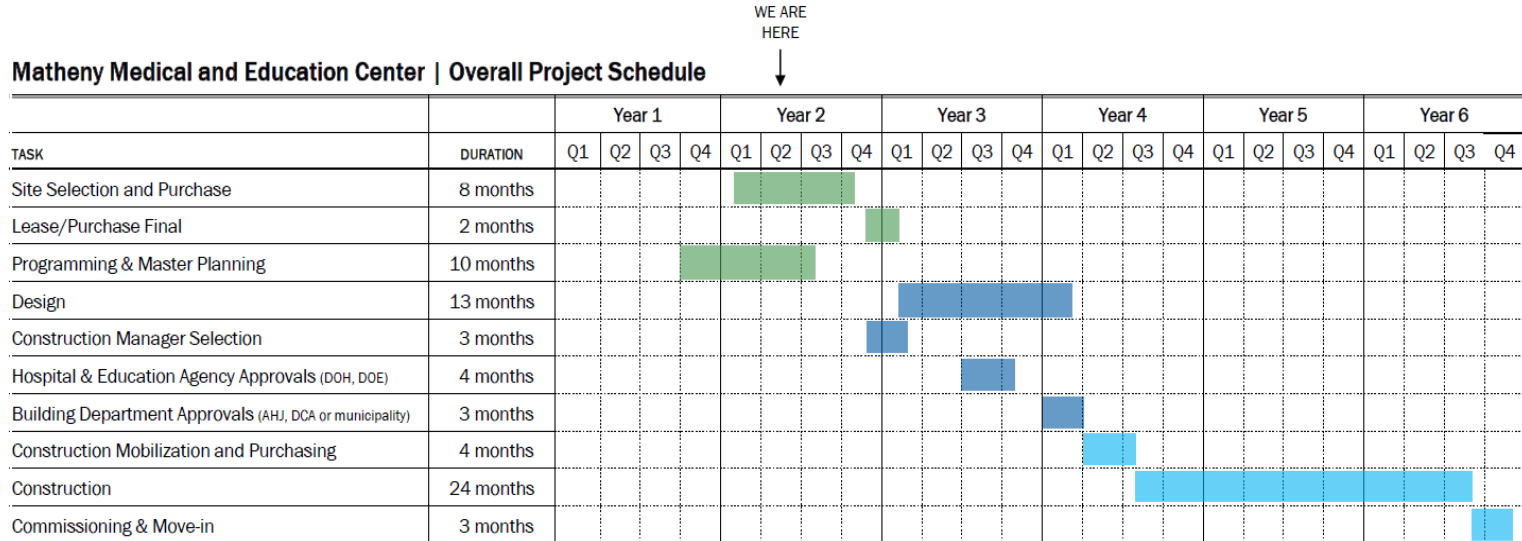


“One Matheny” Strategic Plan



Master Facility Plan

Timeline & Next Steps





Questions

