

Liberty Park

Design Options



Peapack, NJ

CVDA/Princeton Hydro

Agenda

1. Assessment and Analysis
2. Public Meeting 9/13/2018
3. Design Features and Options
4. Stewardship
5. Phasing
6. Public Input on Design Priorities
7. Questions?

Assessment and Analysis

1. Pond Water Quality

- High nutrient inputs
- Low water flow
- Excessive algae growth

2. Pond Riparian Buffer

- Deterioration and safety hazard
- Unnatural hard edge
- Mown grass



Assessment and Analysis

3. Upland Plantings

- Mature canopy trees
- No understory
- Lack of screening
- Lack of seasonal interest



Assessment and Analysis

4. Park Avenue

- Divides sections of park
- Creates safety hazard for children



Assessment and Analysis

5. Main Street Traffic and Site Access

- Entrances not ADA-accessible
- Mid-block crossings



Assessment and Analysis

6. Signs and Way-finding

- Variety of styles
- Lack of engaging information



Assessment and Analysis

7. Play Area

- Existing tot lot well-used
- Limited age range
- Available space to expand



Assessment and Analysis

8. Structures

- Gazebo
- Scout Cabin
- Borough-owned commercial building



Assessment and Analysis

9. Walking Paths and Furnishings

- Deteriorating and wet paths
- Bridges not ADA-compliant
- Lack of uniformity
- War memorials



Assessment and Analysis

10. Lighting

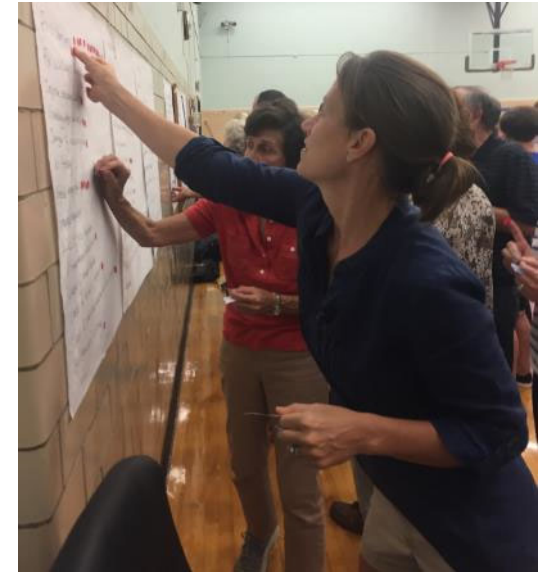
- Harsh existing lights
- Insufficient for nighttime use and safety



Public Meeting 9/13/2018

**Presentation of
Assessment**

**Input on Concerns and
Interests**



Public Meeting 9/13/2018

Concerns: Ranking of Priorities

(x) = number of dots

1. Water quality/Pond (37)

Pond cleanliness (31)

Algae (3)

Broken dam & lack of flow (2)

Lack of sustainability of pond (1)

2. Appearance/Experience (36)

Geese droppings (18)

Bad (atrocious) lighting (5)

Lack of vision connection to/from Borough Hall (4)

Mismatched furnishings (2)

Lack of historic context (2)

War monuments create barrier along water (2)

General cleanup (1)

Unappealing setting for nice events (1)

Lack of understory (1)

3. Programming/Use (28)

Underuse of Scout Cabin (7)

Loss of ice skating (3)

Designing for use:

Lack of formal & informal gathering spaces (6)

Lack of variety of uses (3)

Lack of bike racks—active access (2)

Connecting the park:

Division of parks by Park Ave roadway (4)

Lack of cohesion between tot lot & park (3)

4. Safety and Maintenance (10)

Crumbling edge of pond (5)

Safety (bridge and pond edges) (3)

Danger of crossing weir (1)

Fix walkways (accessibility) (1)

Public Meeting 9/13/2018

Interests: Ranking of Priorities

(x) = number of dots

Vision (4)

“Destination & delight for all generations”

- Visual signature of town—pond is iconic (2)
- Serve as center of community year-round (2)

1. Programming/Use (57)

- Increase size of park by closing Park Ave for safety & access (20)
- Design park in context of other parks (8)
- Good walking paths (6)
- Summer concerts (5)
- Bocce court (4)
- Ice skating area (3)
- Restore ice skating (3)
- Labyrinth (sacred space) (2)
- Environmental education (programming, plants, spaces) (2)
- Repurpose Scout Cabin as environmental center (1)
- Restore fishing (1)
- Movies in the park (1)
- Picnic area (1)

2. Appearance/Experience (30)

- Maintain simplicity & tradition (8)
- Seasonal plant interest (8)
- Encourage natural beauty (5)
- Public art (connection to Borough Hall lawn) (2)
- Restore fountains (2)
- Rotating art exhibit (1)
- Wetlands meadow with boardwalk (1)
- Native deer-resistant plants (1)
- Restore fence along creek (1)
- Increase accessibility (no steps) (1)

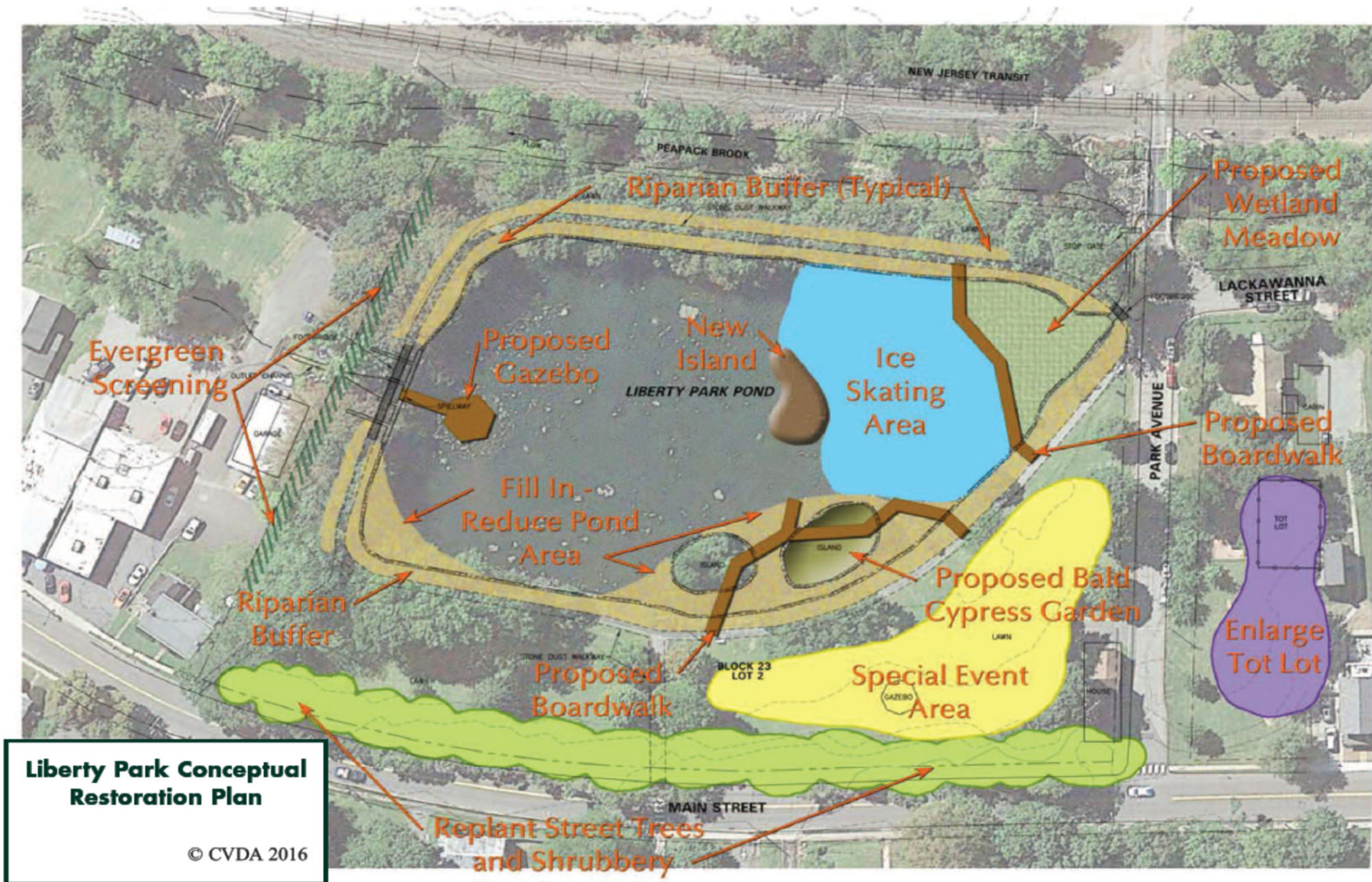
3. Water Quality/Pond (25)

- Water quality improved (21)
- Sustainable (4)

4. Maintenance (8)

- Reasonably maintainable space & plan (8)

Proposal: Conceptual Plan



Design Features and Options

10 Design Features

3 Options for each Design Feature ranked by cost


1. Pond Water Quality
2. Pond Riparian Buffer
3. Upland Plantings
4. Park Avenue
5. Main Street Traffic-Calming
6. Way-Finding and Signage
7. Play Area
8. Structures
9. Walking Paths
10. Lighting

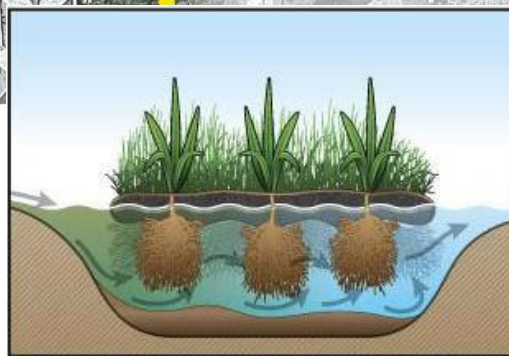
1. Pond Water Quality

Option A

Irrigation well

 Aerator bubblers

 Floating wetland islands



1. Pond Water Quality

Option B

Irrigation well

 Aerator bubblers

 Water lilies and wetland plants } 25% pond surface



1. Pond Water Quality

Option C

Irrigation well

 Aerator bubblers

 Water lilies

 Wetland plantings in containers

} 40% pond surface

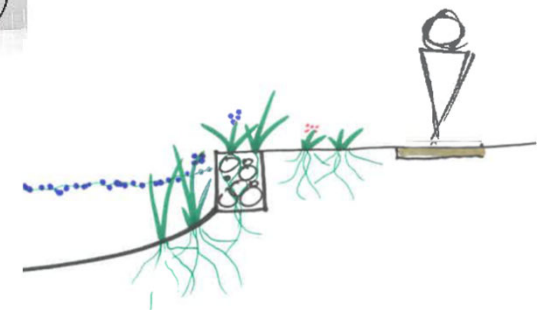


2. Pond Riparian Buffer

Option A


■ Plant into existing shoreline

- Install hardy native plants into existing stone gabion baskets and soft sediment to naturalize the shoreline



2. Pond Riparian Buffer

Option B


 Create a bioengineered shoreline

- Cover stone gabion baskets and eroding shoreline with coconut fiber mats
- Backfill with soil
- Plant with natives to stabilize and naturalize the shoreline




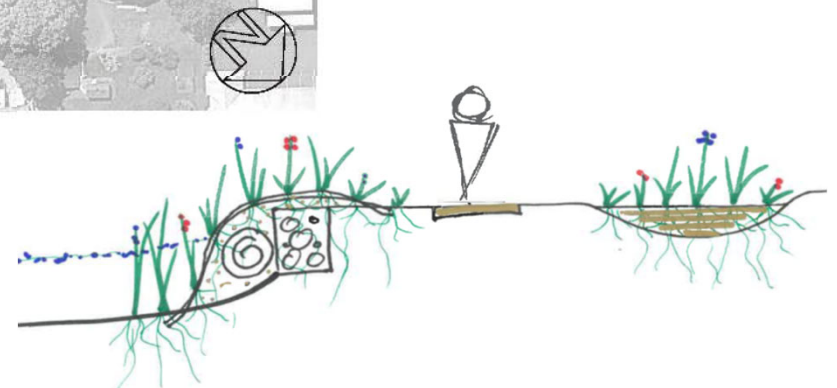
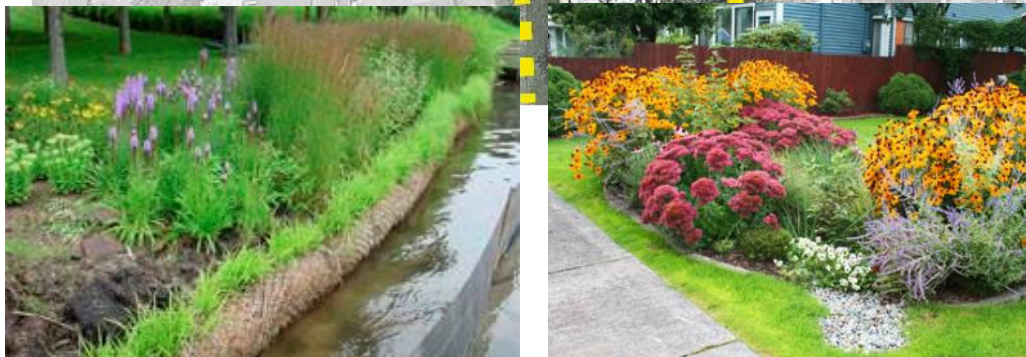
2. Pond Riparian Buffer

Option C

 Create a bioengineered shoreline

- Cover stone gabion baskets and eroding shoreline with coconut fiber mats
- Backfill with soil
- Plant with natives to stabilize and naturalize the shoreline

 Plant rain gardens to intercept runoff



3. Upland Plantings

Option A

● Arborist to inspect trees

- Remove dead or dying trees, including infected ash trees
- Prune for tree health and public safety



3. Upland Plantings

Option B

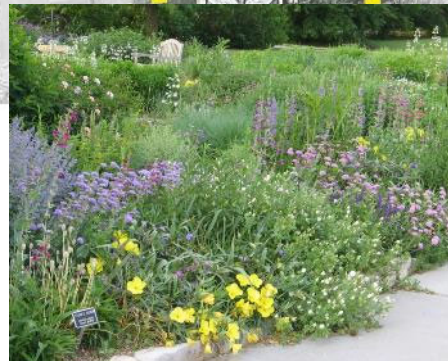
- Arborist to inspect trees
 - Remove dead or dying trees, including infected ash trees
 - Prune for tree health and public safety
- Install trees and shrubs to screen unappealing views
- Create an understory that allows views into park
 - Replacement young canopy trees
 - Shrubs
 - Groundcovers



3. Upland Plantings

Option C

- Arborist to inspect trees
- Install trees and shrubs to screen unappealing views
- Create a natural understory and garden plan that allows views into park
 - Replacement young canopy trees
 - Flowering trees
 - Shrubs
 - Perennials
 - Groundcovers
- ↕ Create visual and landscaping connection to municipal campus



4. Park Avenue

Option A

-  Add striping at primary pedestrian crossing

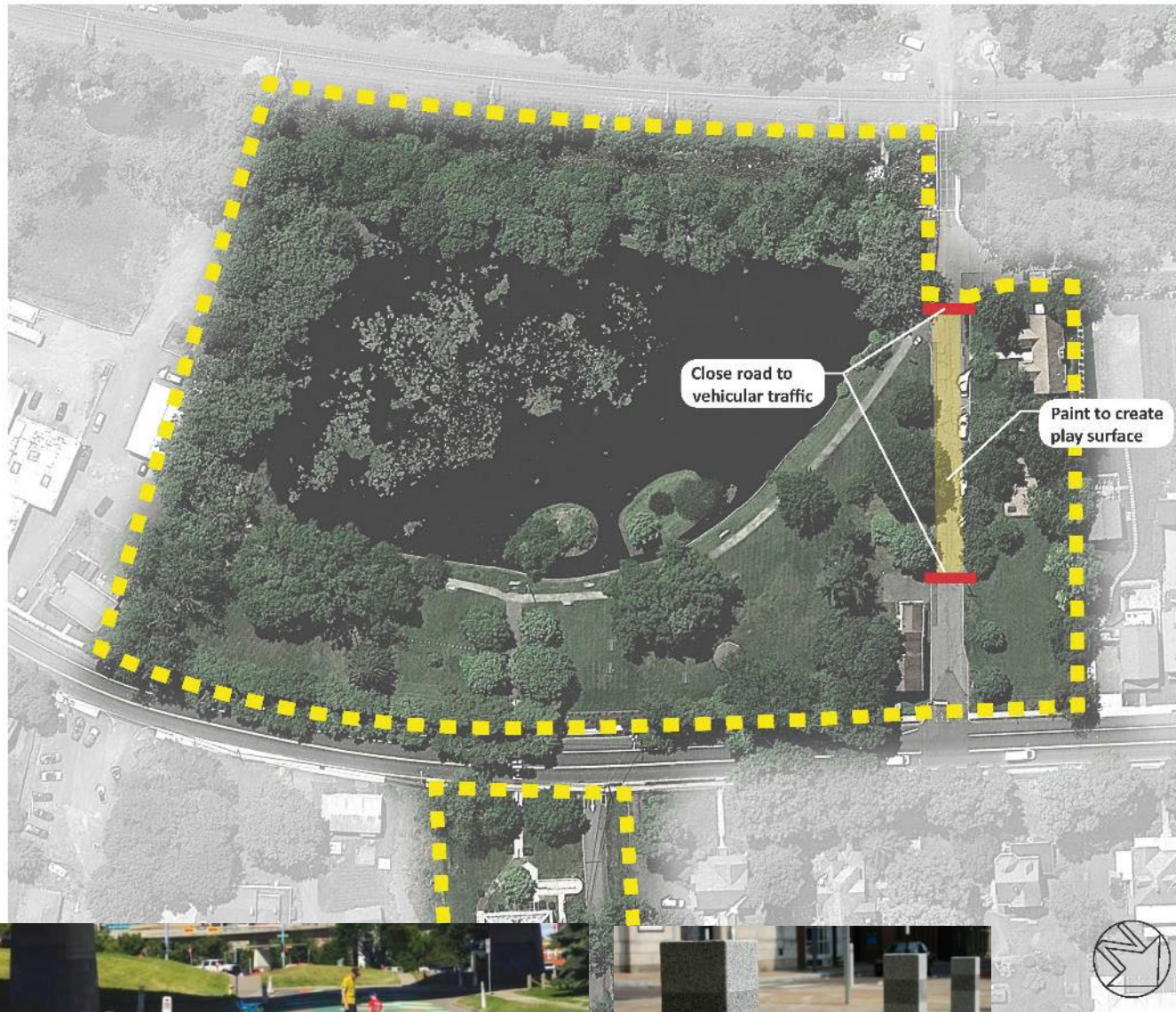


4. Park Avenue

Option B

— Close portion of road to vehicular traffic and install granite bollards

■ Paint asphalt to create a play surface



4. Park Avenue

Option C

— Close portion of road to vehicular traffic and install granite bollards


■ Remove road and plant to expand green space

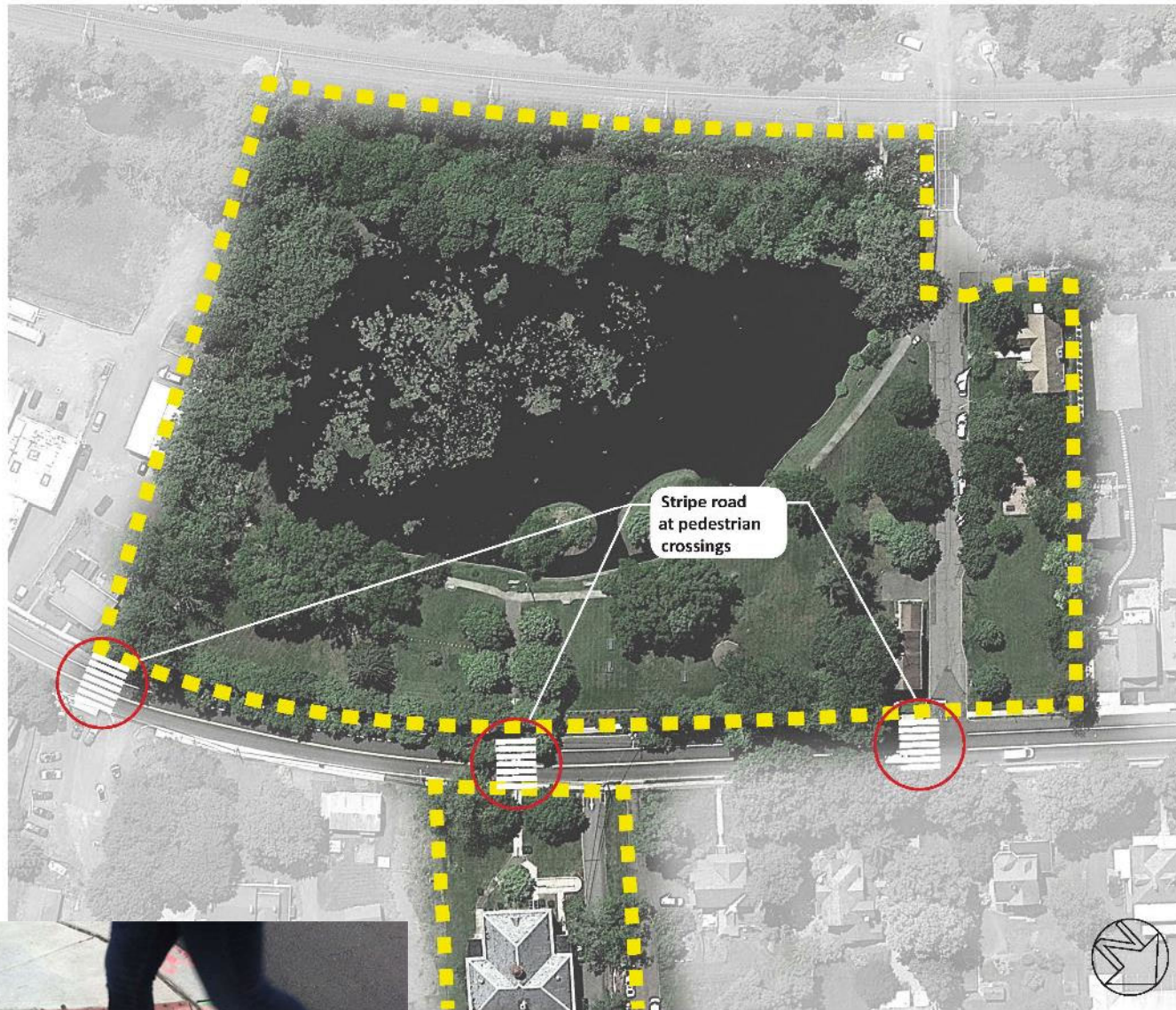
- Remove asphalt and base
- Improve soil
- Incorporate area into planting plan
- Provide for driveway/parking



5. Main Street Traffic-Calming

Option A

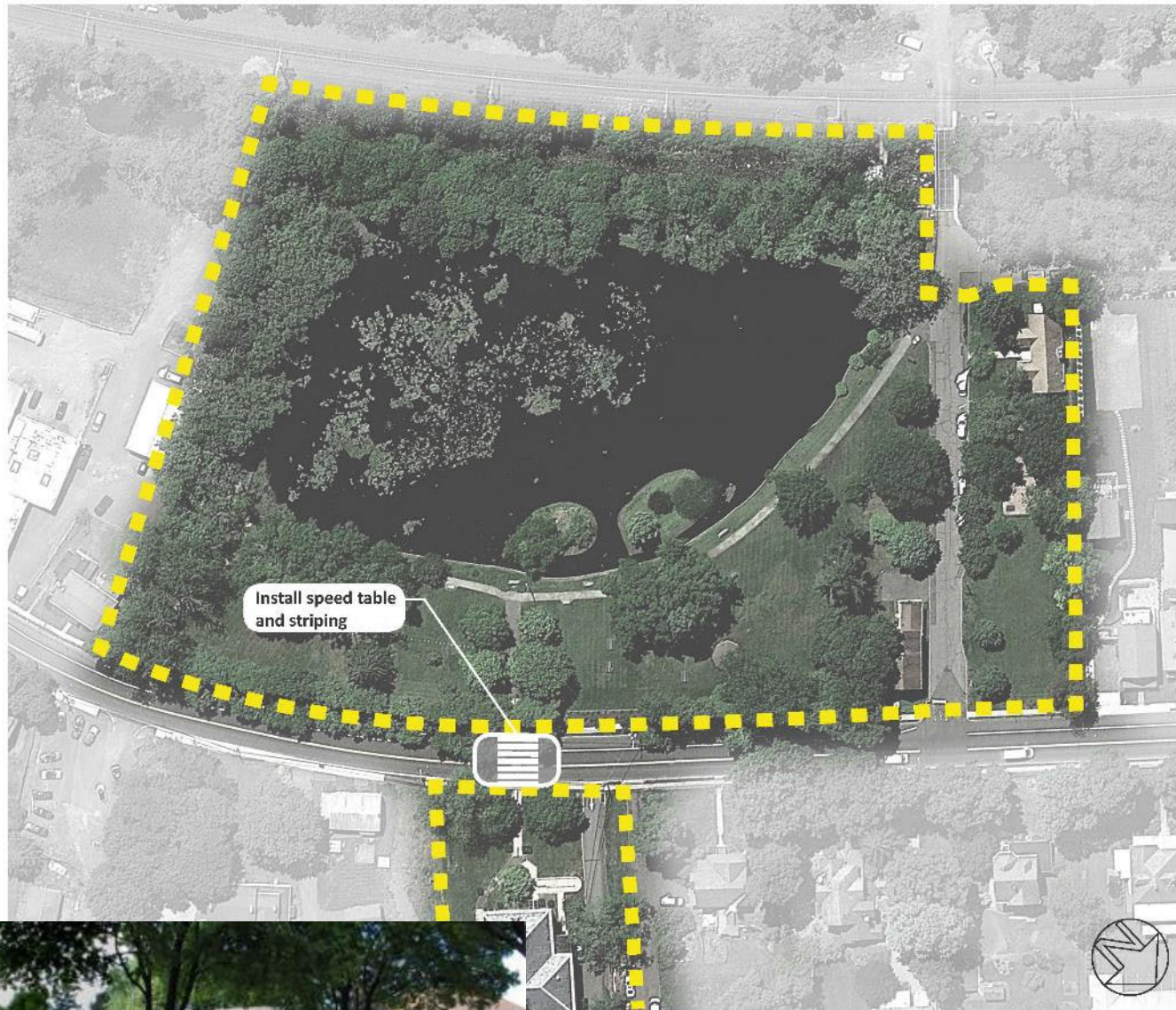
-  Add street striping and make pedestrian crossings ADA-accessible



5. Main Street Traffic-Calming



Option B

-  Install a speed table and add striping at primary pedestrian crossing



5. Main Street Traffic-Calming

Option C

-  Install curb bump-outs and add striping at primary pedestrian crossings
-  Install speed table between curb bump-outs at main entrance



6. Way-Finding

Option A

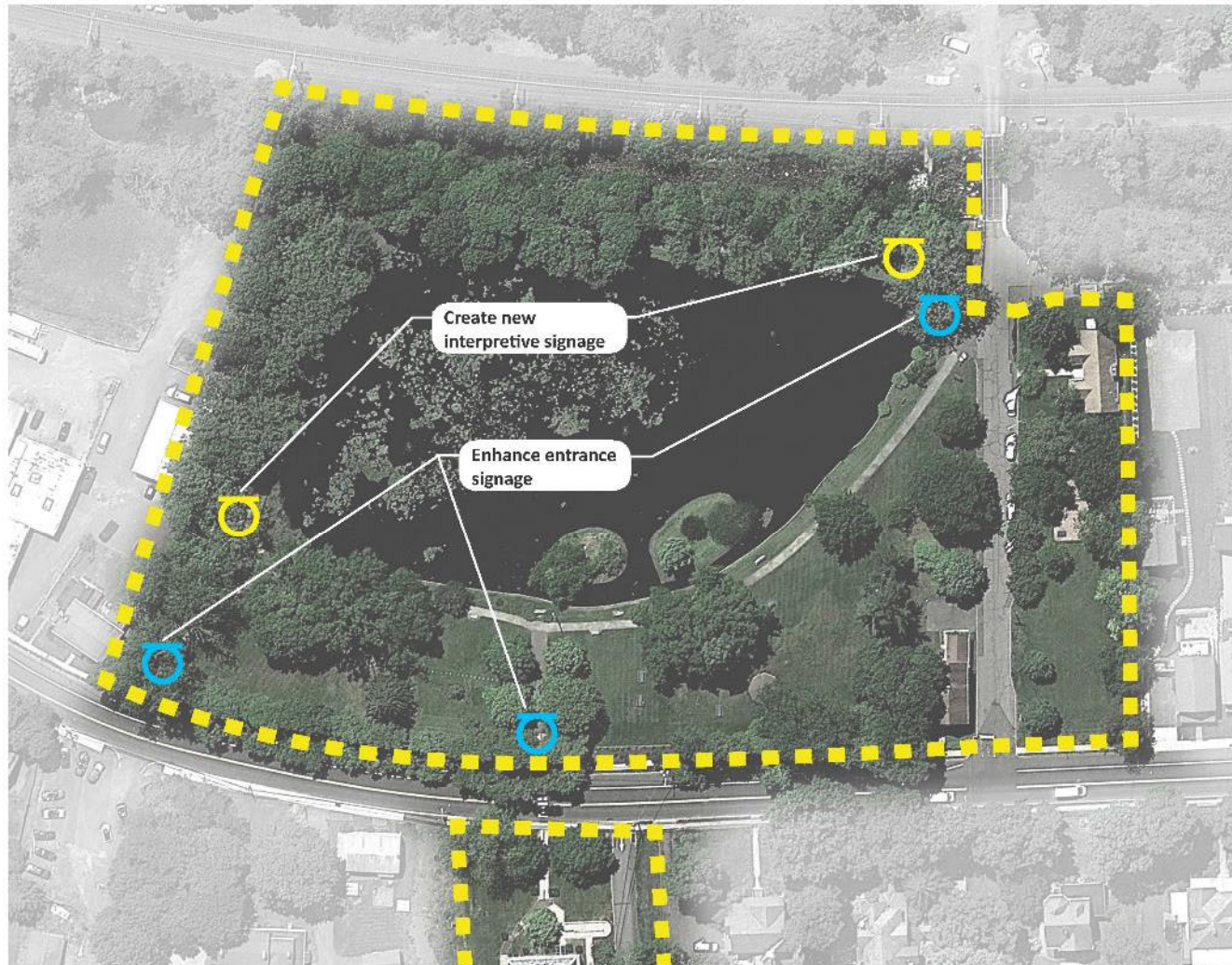
 Leave existing signage as-is



6. Way-Finding

Option B

-  Enhance entrance and way-finding signage
-  Create new historic and environmental interpretive signage



What is a bioswale?

Not all grasses are the same. Bioswales are often designed as broad, meandering channels that slow the flow of stormwater to reduce downstream flooding. Bioswales also help prevent soil erosion by promoting infiltration of water into the ground beneath. They are designed to capture pollutants and are designed to be self-cleaning. They are also designed to regulate runoff before it reaches local streams.

Different plants and animals like different growing conditions. The native plants used in this garden help promote the diversity of the area, and they are well suited to the local climate. They are also designed to be self-cleaning and to regulate runoff before it reaches local streams.

Look for some of the local species shown below.



Tyson Park Bioswale Project

Welcome

Discover:

- 1. How to use the map
- 2. How to use the map
- 3. How to use the map
- 4. How to use the map

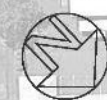
Key:

- Entrance
- Path
- Sign
- Plant

PLANT LABELS



AWMNEY ARBORETUM



7. Play Area

Option A

- Replace fence and safety surface in existing tot lot



7. Play Area

Option B

- Expand play area and add adventure or nature play equipment for all ages

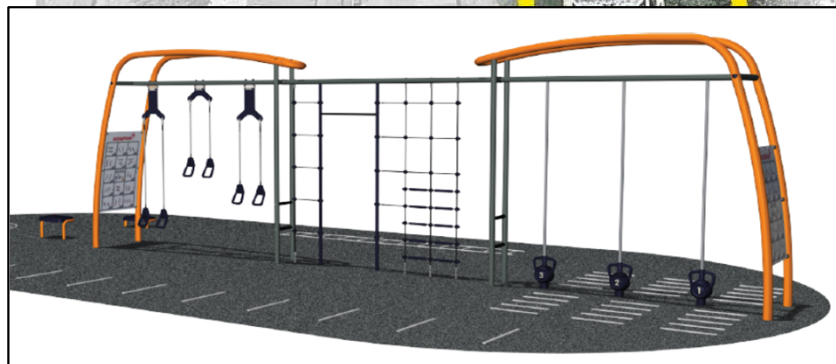
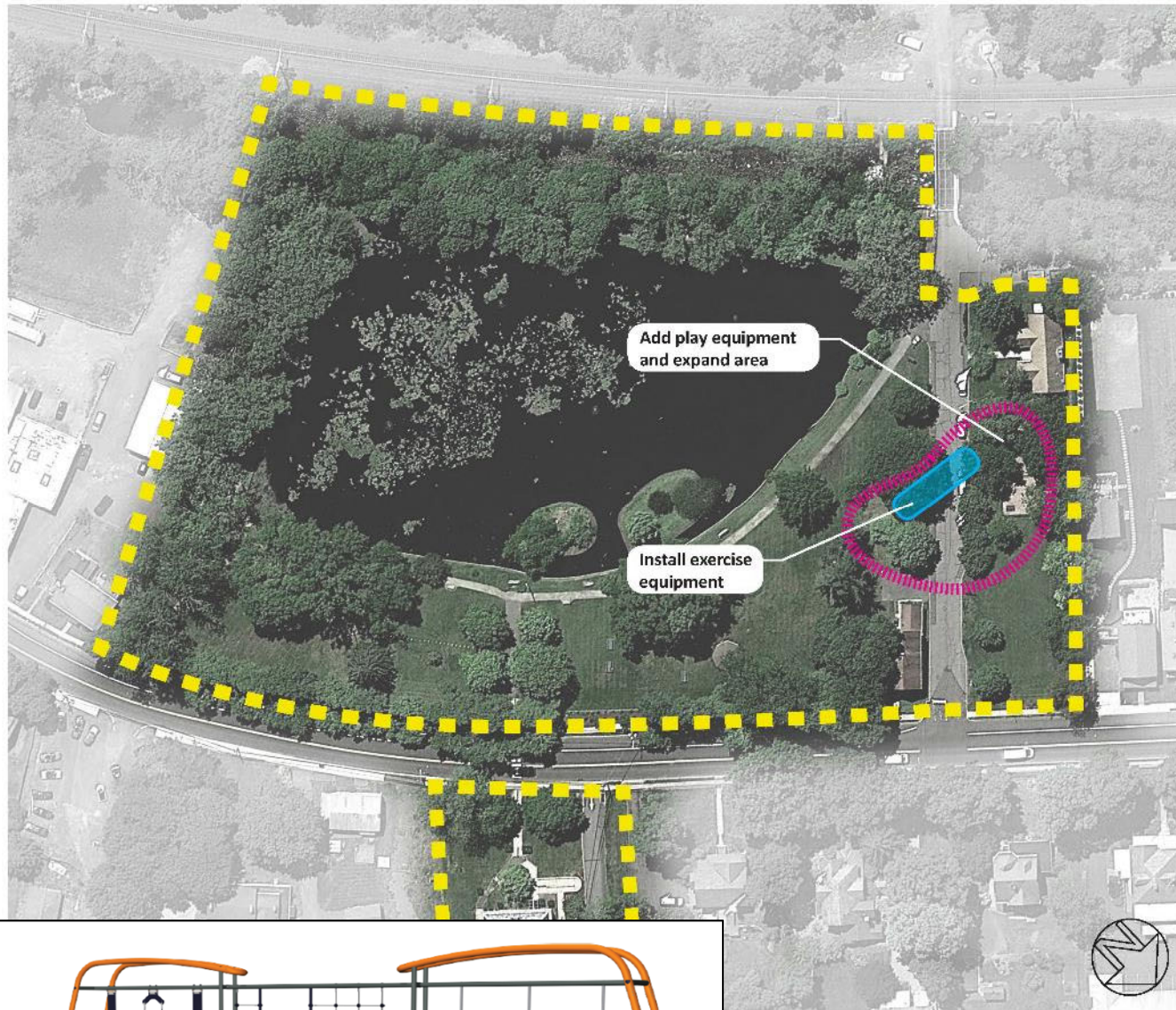


7. Play Area

Option C

Expand play area and add adventure or nature play equipment for all ages

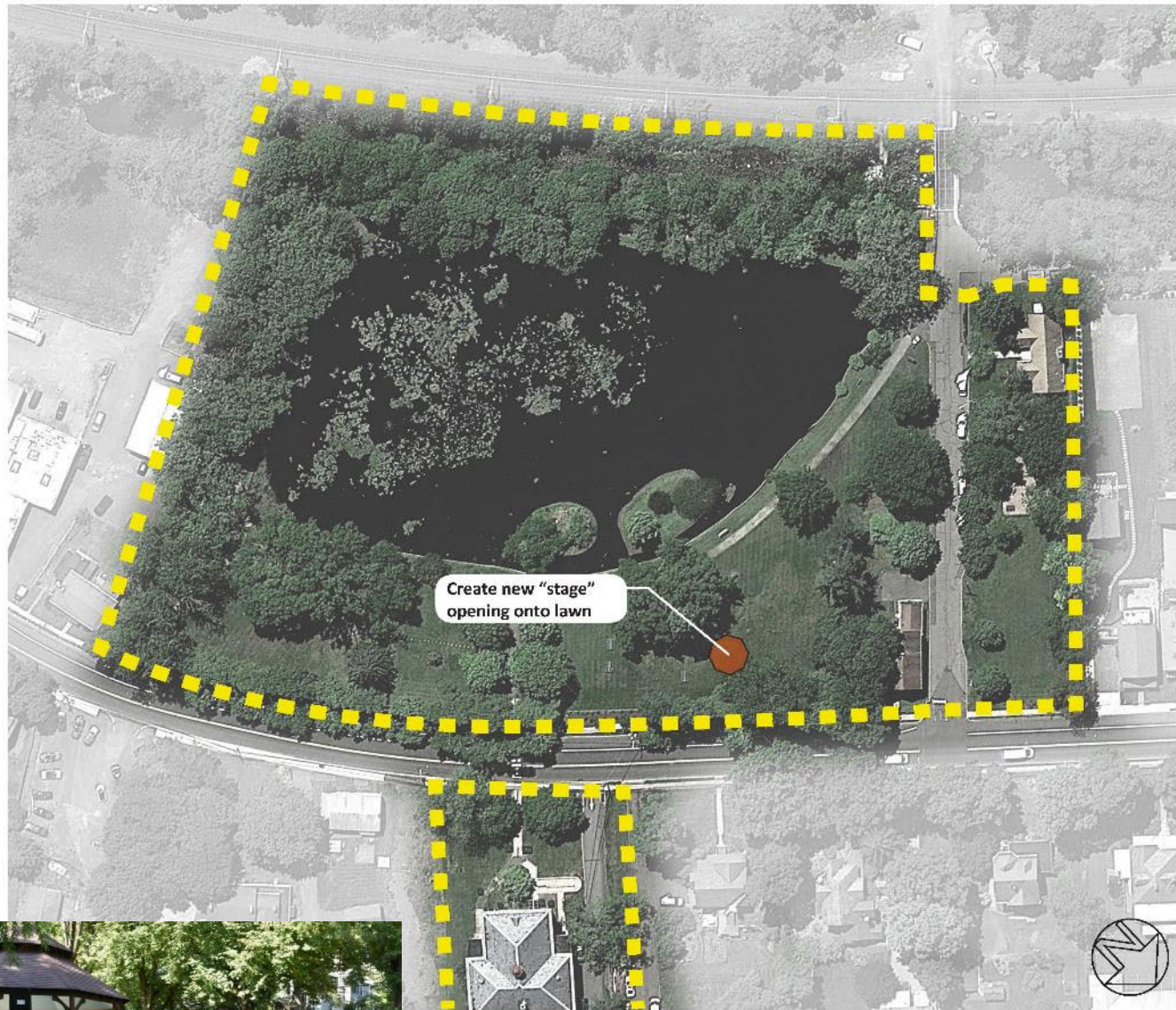
Install exercise equipment suitable for all ages



8. Structures


Option A


- Renovate gazebo to create new "stage" opening onto lawn

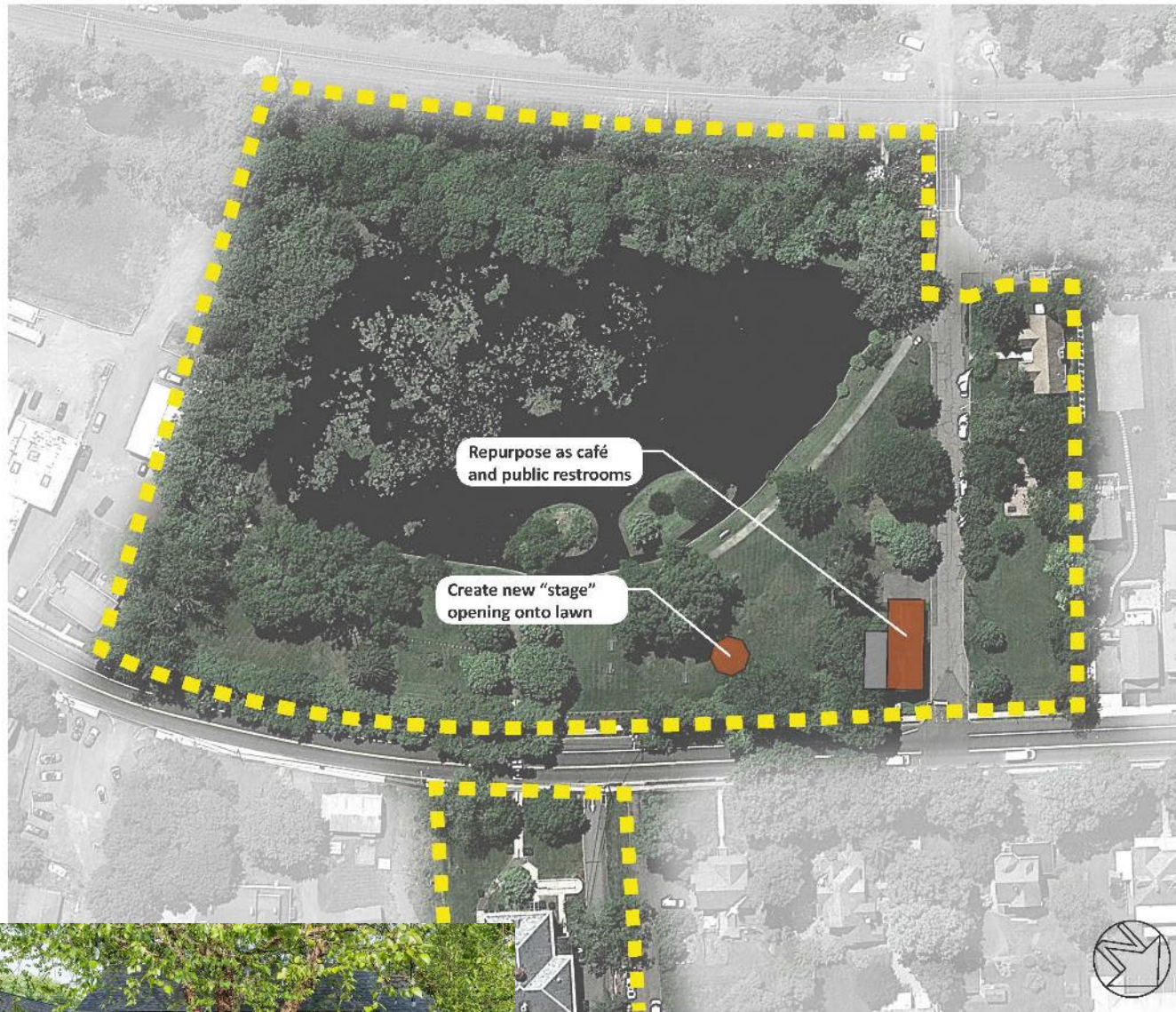


8. Structures

Option B

 Renovate gazebo to create new "stage" opening onto lawn

 Repurpose building as café with terrace and public restrooms



8. Structures

Option C

-  Renovate gazebo to create new "stage" opening onto lawn
-  Repurpose building as café with terrace and public restrooms
-  Repurpose Scout Cabin for environmental education, community use, and rental



9. Walking Paths





Option A

- Restore existing paths by installing edging and top-dressing with gravel



9. Walking Paths

Option B

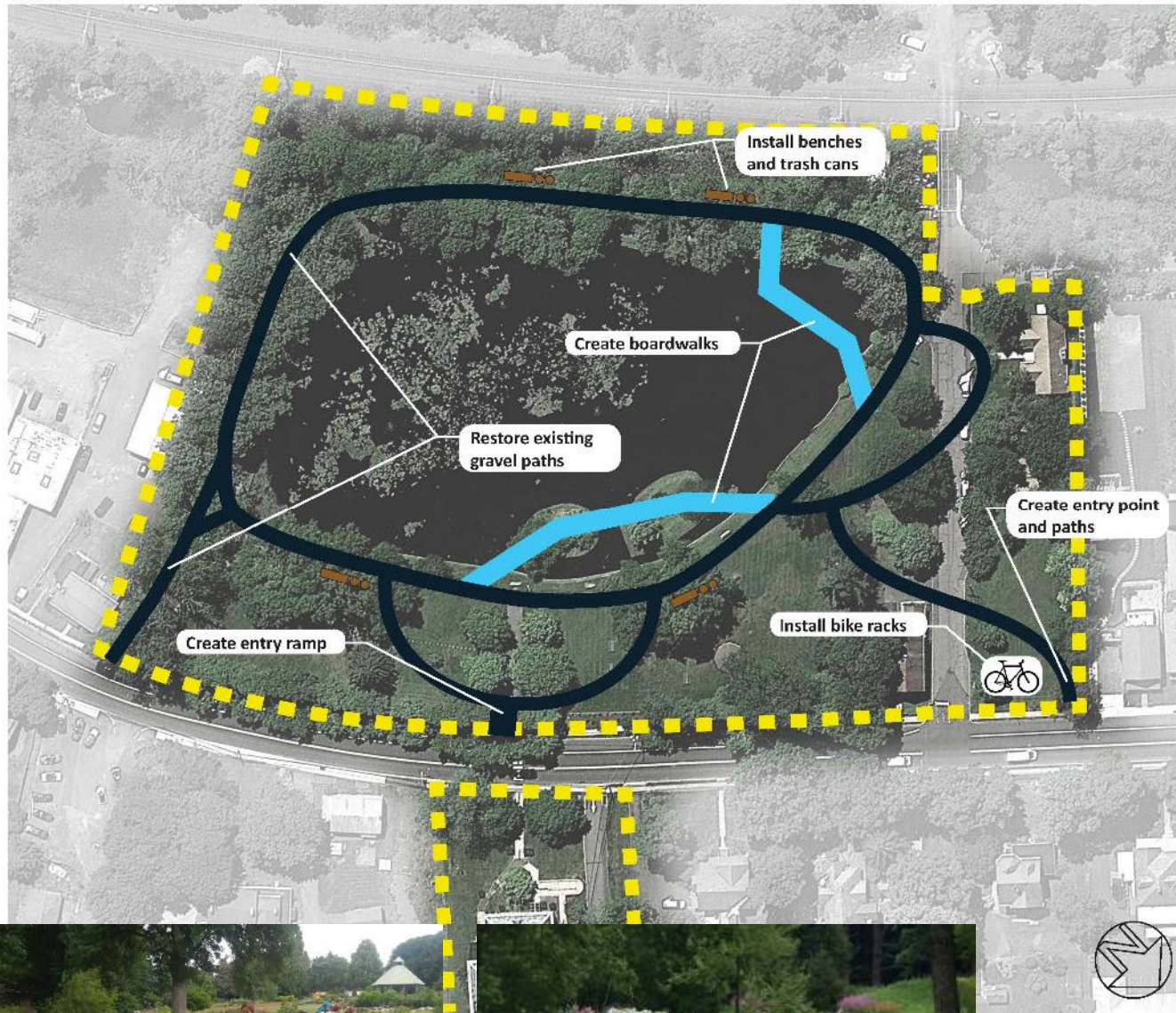
-  Restore existing paths by installing edging and top-dressing with gravel
-  Create ADA-accessible entrance ramp
-  Install new benches and trash/recycling cans
-  Install bicycle racks



9. Walking Paths


Option C

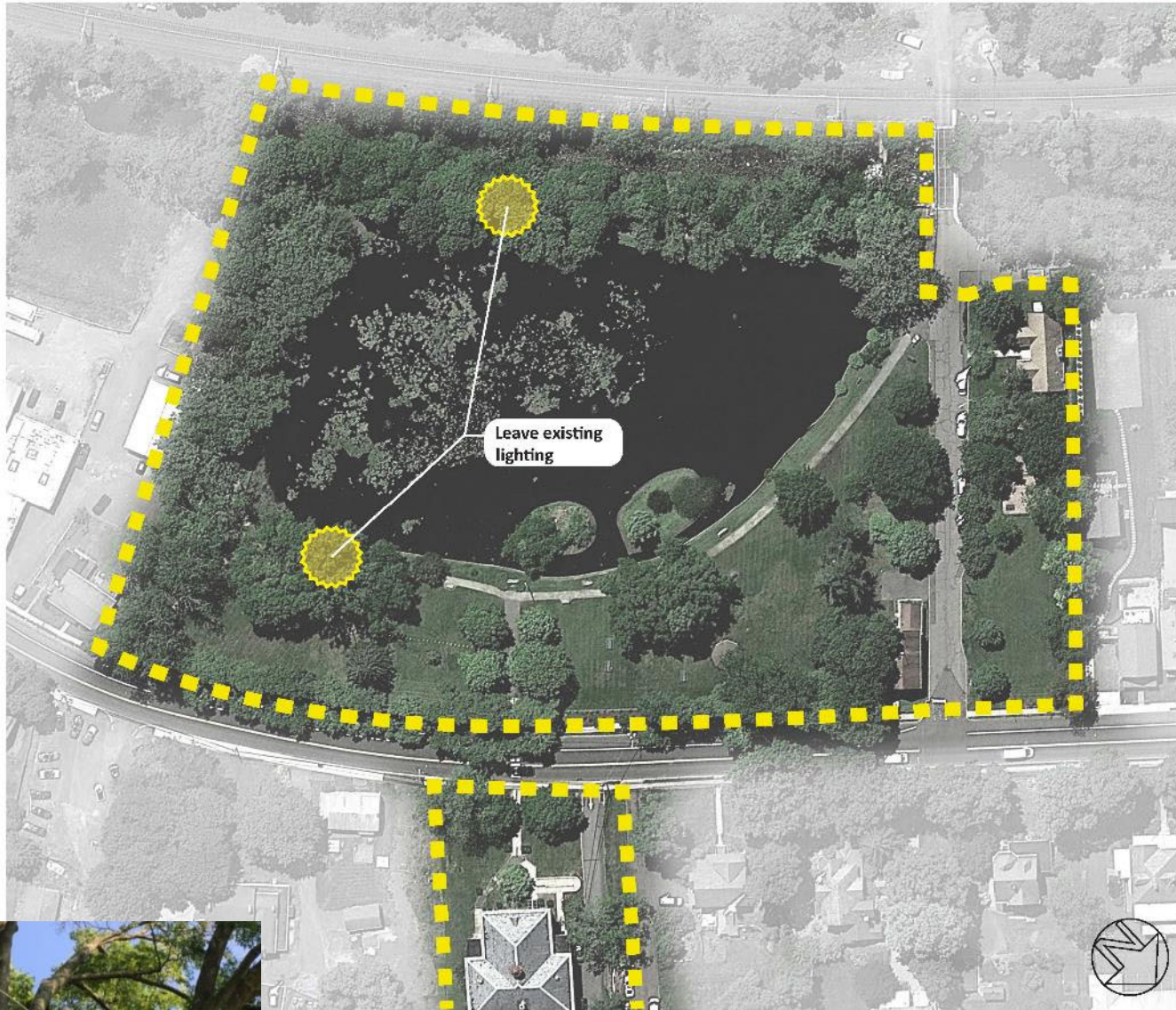
-  Restore existing paths by installing edging and top-dressing with gravel
-  Create ADA-accessible entrance ramp
-  Install new benches and trash/recycling cans
-  Install bicycle racks
-  Create new entrances and paths to new destinations
-  Install boardwalks and fishing platforms through wetlands



10. Lighting



Option A

 Leave existing lighting as-is



10. Lighting

Option B

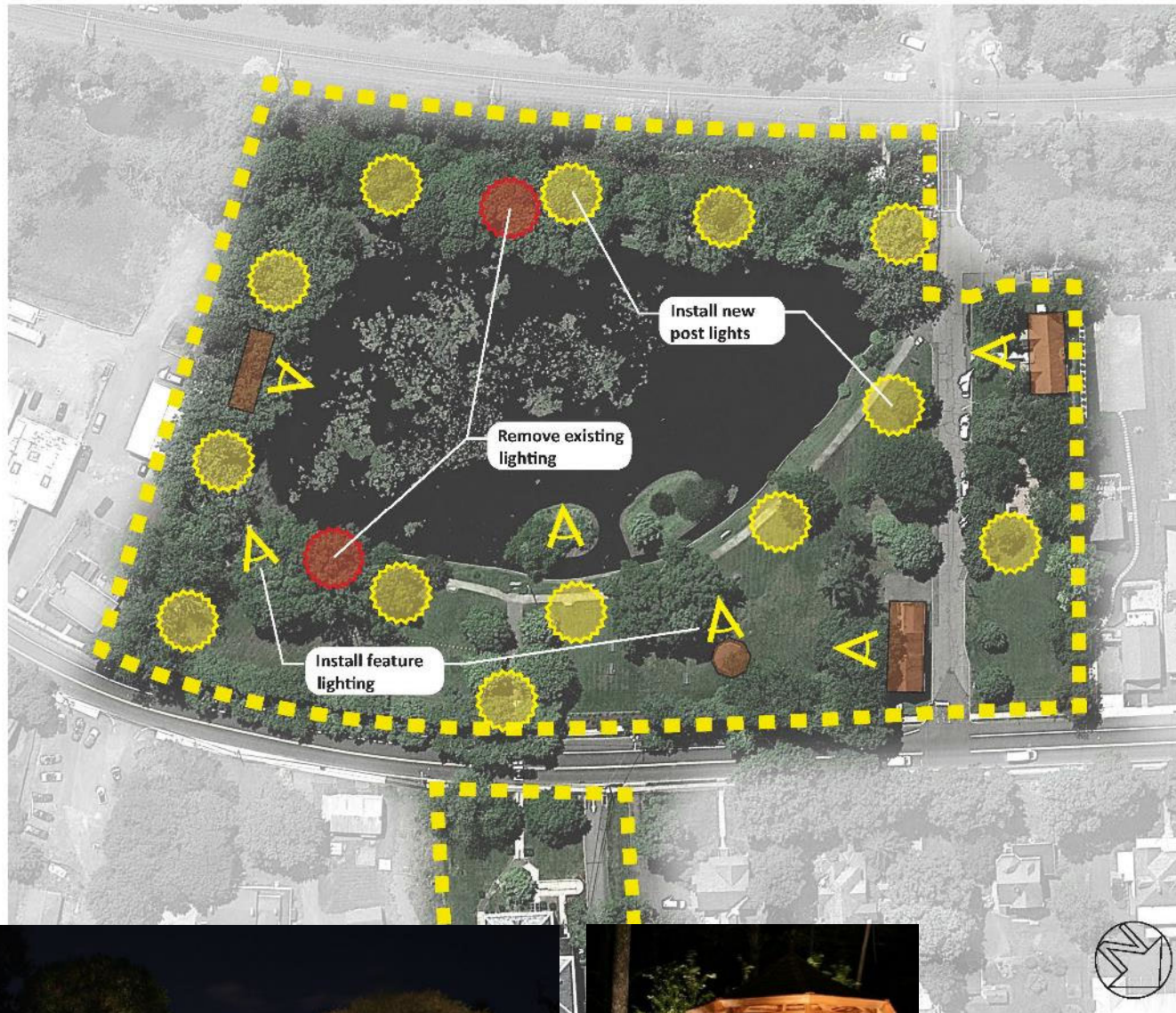
-  Remove existing lighting
-  Install new lights on posts along path



10. Lighting

Option C

-  Remove existing lighting
-  Install new lights on posts along path
-  Install feature lighting to highlight structures and trees



Stewardship

1. Pond Water and Riparian Buffer Plantings
 - Irrigation well and aeration system
 - Plantings
2. Upland Plantings
 - Naturalistic pruning
 - No fertilizers
3. Structures
 - Friends group



Phasing

1. Prioritize features
 - Address water quality and pond edge immediately
 - Discourage water fowl
2. Prioritize projects based on public input and funding availability

Public Input on Priorities

1. Choice of options A, B, or C for each of the ten features with opportunity to mix and match

A: \$

B: \$\$

C: \$\$\$

2. Phasing is budget-driven, based on priorities assigned to each of ten design features

Option A may be one phase

Option B may be two or three phases

Option C may be multiple phases

Questions?
